

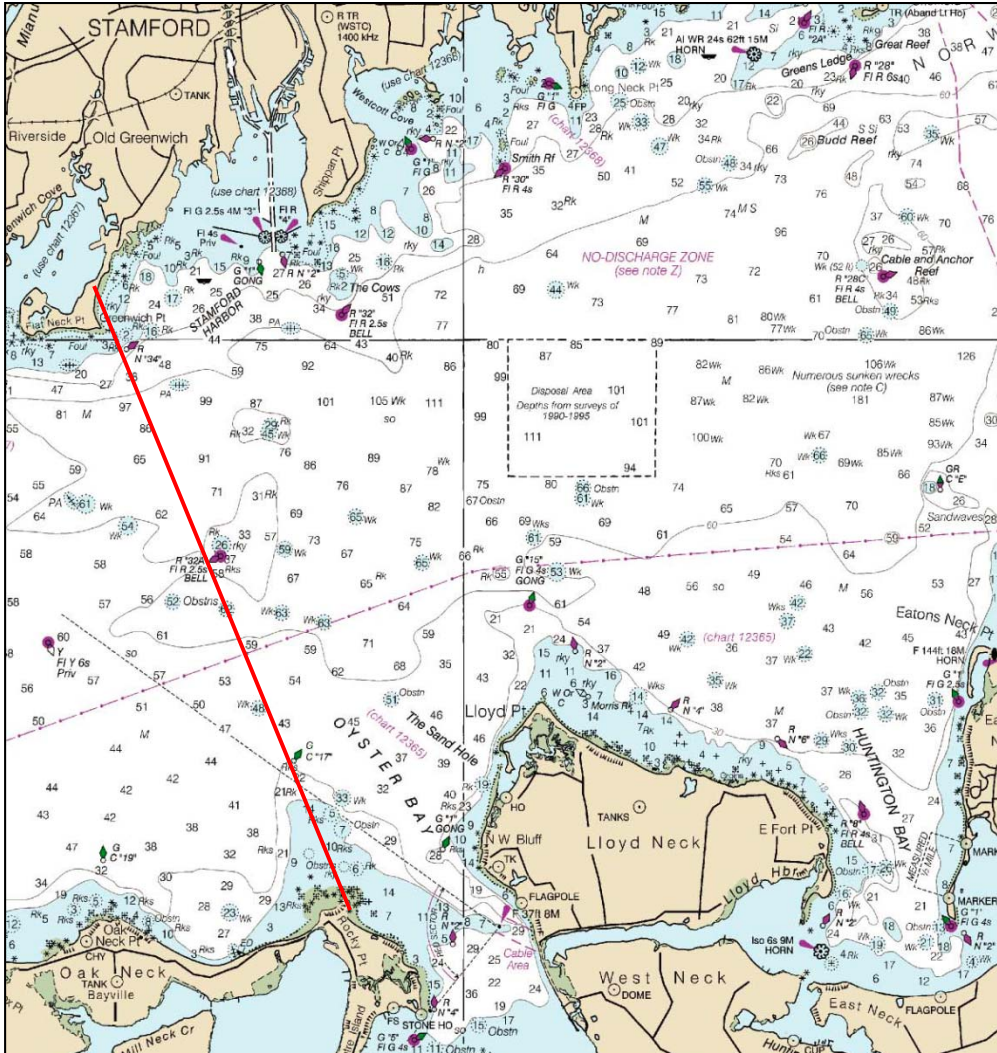


Interclub Bluefish Tournament, Inc.

**Charts Marking the Boundaries &
Weigh-In Location**

Interclub Bluefish Western Boundary: Greenwich Point N°34" (40° 59.913' N, 073° 33.883' W) (Stamford Harbor) to Rocky Point G°17" (40° 56.313' N, 073° 31.958' W) Centre Island, L.I., N.Y.

Interclub Bluefish Eastern Boundary: Faulkner's Island Light (41° 12.732' N, 072° 39.169' W) to Roanoke Point Shoal G-C°5" (41° 00.209' N, 072° 42.255' W)



Boundaries are also clarified to extend North (upstream) in the Housatonic River and upstream for all other rivers, streams and tributaries within our boundaries.)

Weigh-In Location

The Weigh-in for the Interclub Bluefish Tournament takes place at Captain's Cove Seaport in Black Rock Harbor, Bridgeport Connecticut from 12:00 pm to around 2:30 pm. Fish to be weighted in can be transported to the weigh-in location either by boat or, after the boats return to their respective home moorings, by land vehicle. If transported by boat, following weigh-in the boats are returned to their respective home moorings.

